



---

# LAUSD ITD Service Desk

## How to Locate IBM Serial Numbers

---

(11/19/08)  
© LAUSD ITD Service Desk  
333 S. Beaudry Ave. 9<sup>th</sup> Floor  
Phone 213.241.5200

# Table of Contents

How to Locate Serial Number in Windows.....	2
How to Verify Warranty Status .....	3
How to Locate Serial Number on Portable Computers .....	4
How to Locate Serial Number on Desktops & Servers .....	5
Important IT Service Catalog Information .....	6

## How to Locate Serial Number in Windows

If your computer is currently booting up you can use Internet Explorer and Lenovo's Auto-detect tool to locate your serial number. Please note you must also have working internet connection.

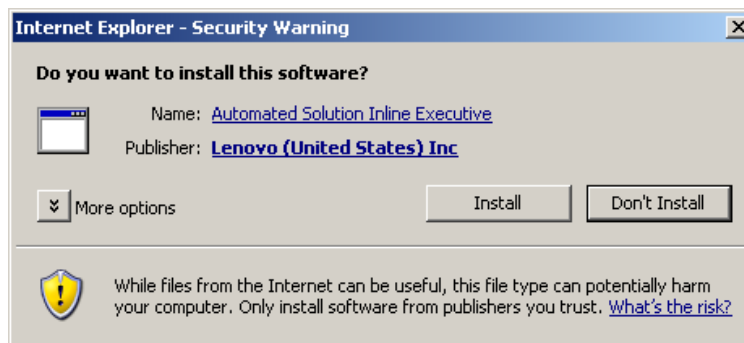
***If your system does not power on or Windows does not start-up please refer to the sections below (starting on page 4).***

### Dell System Profiler:

1. Click [here](#) to launch the IBM/Lenovo Auto-detect tool (Only works with Internet Explorer)
2. Click on **Auto-Detect this System**



3. Please make sure you agree to any software install notifications that come up



4. Your systems information will be displayed once install is complete.

Additional Resources:

[Find your machine's serial number script.](#)



## How to Locate Serial Number on Portable Computers

The serial number is located under the computer. The term "Serial Number" is abbreviated as "s/n".



**Product number  
(Machine type - Model)**



**Serial number**

Please refer to the following IBM/Lenovo website link for additional information:

[Finding my product number \(machine type / model or part number\) and serial number](#)

## How to Locate Serial Number on Desktop Computers

The serial number is located in the front and back of the computer. The term “Serial Number” is abbreviated as “s/n”.



**Product number  
(Machine type - Model)**

TYPE 8215-E1U S/N 23-28X9N

**Serial number**

Please refer to the following IBM/Lenovo website link for additional information:  
[Finding my product number \(machine type / model or part number\) and serial number](#)

## **Important IT Service Catalog Information**

Please note that as of May 30, 2008 only Intel Pentium 4 processor or higher are supported. Windows 2000 Operating System and newer (Vista is currently not supported).

Also as of July 1, 2007, the following supplies are no longer provided by ITD:

- Keyboards
- Mice
- Monitors
- Laptop batteries
- AC power adapters

**Please refer to the [Procedures for Obtaining IT Support & Repair for Various Electronic and Computer Equipment - REF-1657.2](#) & [IT Service Catalog](#) for additional information.**